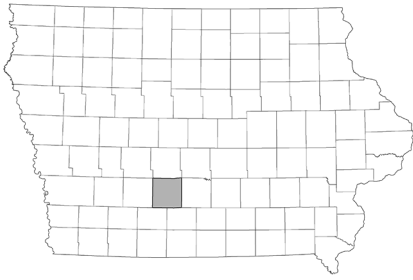


Data for Decision Makers



City Profile Macksburg, Iowa

report created: 12/07/2020

Population Profile

The 2018 population estimate for Macksburg is 118. Between 2010 and 2018 the population increased by 4.4%. The City of Macksburg is in Madison County. Madison County saw a 3.4% population increase between 2010 and 2018. Macksburg's population is predominantly White. Between 2000 and 2010 there was a slight decrease in the percent of White population.

Total Population

	2000 ¹	2010 ¹	2018 ²
Macksburg	142	113	118
Male	67	59	Not Available*
Female	75	54	Not Available*
Madison County	14,019	15,679	16,206
State of Iowa	2,926,324	3,046,355	3,156,145

* population estimates by sex not provided at the city level

Percentage of Population by Race/Hispanic Origin¹

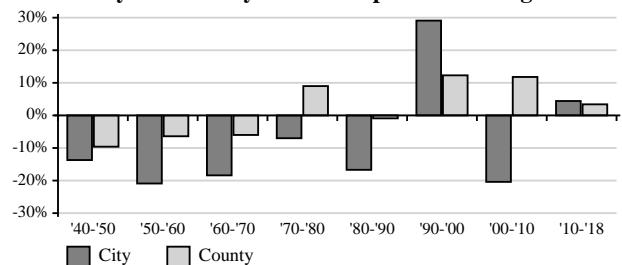
Race Groups	City		County	
	2000	2010	2000	2010
One Race Only	98.6%	98.2%	99.3%	99.1%
White	97.2%	96.5%	98.6%	98.1%
White Alone, Not Hispanic	97.2%	96.5%	98.2%	97.2%
Black or African American	0%	0%	0.1%	0.3%
Asian	1.4%	0%	0.2%	0.3%
American Indian or Alaska Native	0%	1.8%	0.3%	0.2%
Hawaiian or Pacific Islander	0%	0%	0%	0%
Other	0%	0%	0.2%	0.2%
Two or more races	1.4%	1.8%	0.7%	0.9%
Hispanic origin*	0%	0%	0.7%	1.3%

* Hispanics can be of any race.

Neighboring Cities - Percent Population Change

	'90 ¹ -'00 ¹	'00 ¹ -'10 ¹	'10 ¹ -'18 ²
Afton	-3.78%	-7.85%	-3.08%
East Peru	15.91%	-18.30%	4.00%
Lorimor	13.26%	-15.69%	-4.44%
Orient	6.91%	1.49%	-8.58%
Winterset	13.63%	8.85%	2.25%
Macksburg	29.09%	-20.42%	4.42%
Madison County	12.30%	11.84%	3.36%
State of Iowa	5.39%	4.10%	3.60%

City and County Percent Population Change



Regional Director

Brooke Blessington
200 W 2nd Avenue, Suite A
Indianola, IA 50125
bbless@iastate.edu
515-961-6237

County Office

Brooke Blessington
117 N John Wayne Dr
Winterset, IA 50273
bbless@iastate.edu
515-462-1001

<http://indicators.extension.iastate.edu>

The City of Macksburg, compared to Madison County, had a lower percentage of young people (17 or younger) and a higher percentage of older people (65 and older) in 2010. Population pyramids⁶ visually graph the age-sex composition of the population for Macksburg and Madison County. Each bar represents the percent of the total population for each age-sex group.

Households and Families by Type¹

	City		County	
	2000	2010	2000	2010
Total Households	62	53	5,326	6,025
Family Households	66.1%	62.3%	73.7%	73.2%
Married-couple	58.1%	47.2%	63.9%	62.3%
With Children	22.6%	22.6%	28.5%	26.7%
Female Householder ^a	4.8%	9.4%	7%	7.3%
With Children	3.2%	5.7%	4.7%	4.7%
Male Householder ^b	3.2%	5.7%	2.8%	3.6%
With Children	3.2%	0%	1.6%	2.2%
Nonfamily Households	33.9%	37.7%	26.3%	26.8%
Householder Living Alone	32.3%	34%	22.7%	23%

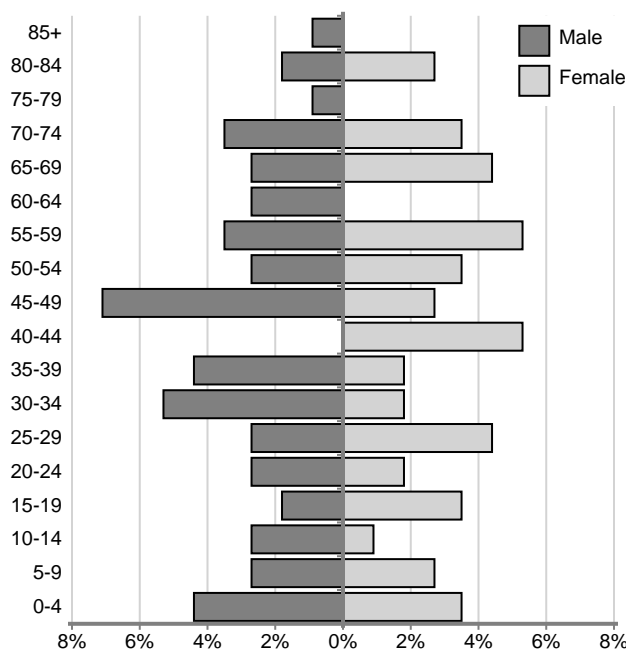
^a No husband present, ^b No wife present

Percentage of Population by Age¹

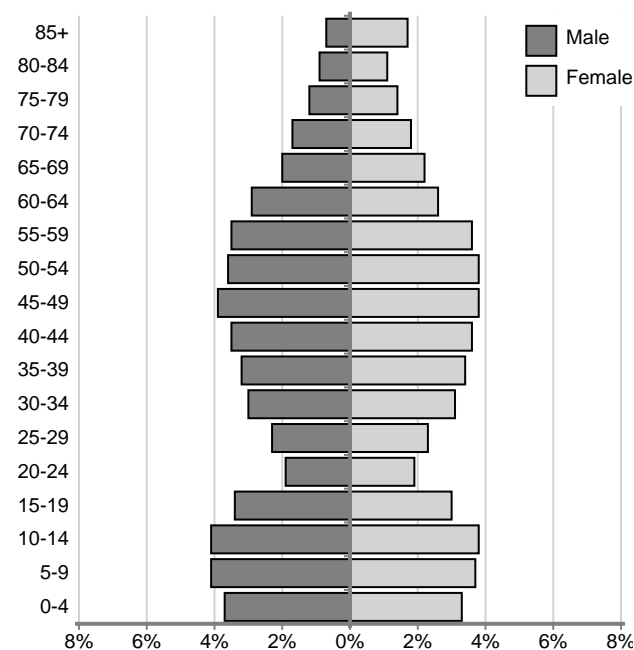
Age Groups	City		County	
	2000	2010	2000	2010
17 or younger	26.8%	20.4%	27.1%	27.2%
18 - 24	6.3%	6.2%	6.9%	5.7%
25 - 44	20.4%	25.7%	27.4%	24.5%
45 - 64	28.2%	27.4%	23.4%	27.8%
65 or older	18.3%	20.4%	15.2%	14.8%
85 or older	2.8%	0.9%	2.8%	2.4%
Median Age (years) ⁴	38.3	44.4	37.9	39.8
Age Dependency ⁵	82.1	68.8	73.3	72.4
Old-Age	33.3	34.4	26.3	25.5
Child	48.8	34.4	47.0	46.9

⁵Age Dependency Ratio

Macksburg, Iowa Population Pyramid, 2010^{1,6}



Madison County Population Pyramid, 2010^{1,6}



This series was prepared by:

Christopher J. Seeger, Professor & Extension Specialist
 Bailey Hanson, Systems Analyst II & Extension Specialist
 Sandra Burke, Assistant Scientist III & Extension Specialist

For more information on these and other topics, please call the Extension and Outreach specialists listed on the cover page or visit the ISU Extension and Outreach Indicators Portal at indicators.extension.iastate.edu

Information in this document was derived from:

- ¹ U.S. Census Bureau; Decennial Census 1990, 2000, 2010 Summary File 1
- ² U.S. Census Bureau; Population Estimates Program 2018
- ³ U.S. Census Bureau; American Community Survey, 2014-2018
- ⁴ Median is the middle value of a distribution.
- ⁵ Compares, those typically not in the labor force with those typically in the labor force. Old Age dependency is persons 65+ per 100 persons age 18-64. Child dependency is persons under age 18 per 100 persons age 18-64. The total age dependency ratio is persons under age 18 plus persons 65 or older per 100 persons age 18-64.
- ⁶ Population Pyramids represent the age-sex composition of a population. Bars may be missing if particular age-sex groups are missing from the population.

Iowa State University Extension and Outreach does not discriminate on the basis of age, disability, ethnicity, gender identity, genetic information, marital status, national origin, pregnancy, race, color, religion, sex, sexual orientation, socioeconomic status, or status as a U.S. veteran, or other protected classes. (Not all prohibited bases apply to all programs.) Inquiries regarding non-discrimination policies may be directed to the Diversity Advisor, 2150 Beardshear Hall, 515 Morrill Road, Ames, Iowa 50011, 515-294-1482, extdiversity@iastate.edu. All other inquiries may be directed to 800-262-3804.