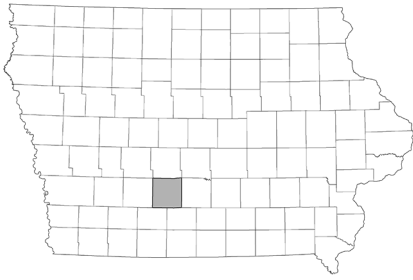


# Data for Decision Makers



## City Profile Bevington, Iowa

report created: 11/18/2020

### Population Profile

The 2018 population estimate for Bevington is 69. Between 2010 and 2018 the population increased by 9.5%. The City of Bevington is in Madison County. Madison County saw a 3.4% population increase between 2010 and 2018. Bevington's population is predominantly White. Between 2000 and 2010 there was a slight increase in the percent of White population.

#### Total Population

	2000 <sup>1</sup>	2010 <sup>1</sup>	2018 <sup>2</sup>
Bevington	58	63	69
Male	33	37	Not Available*
Female	25	26	Not Available*
Madison County	14,019	15,679	16,206
State of Iowa	2,926,324	3,046,355	3,156,145

\* population estimates by sex not provided at the city level

#### Percentage of Population by Race/Hispanic Origin<sup>1</sup>

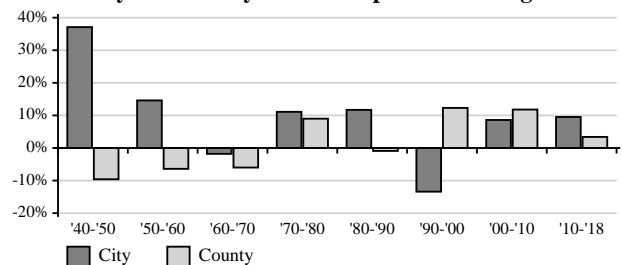
Race Groups	City		County	
	2000	2010	2000	2010
One Race Only	96.6%	100%	99.3%	99.1%
White	96.6%	98.4%	98.6%	98.1%
White Alone, Not Hispanic	96.6%	96.8%	98.2%	97.2%
Black or African American	0%	0%	0.1%	0.3%
Asian	0%	1.6%	0.2%	0.3%
American Indian or Alaska Native	0%	0%	0.3%	0.2%
Hawaiian or Pacific Islander	0%	0%	0%	0%
Other	0%	0%	0.2%	0.2%
Two or more races	3.4%	0%	0.7%	0.9%
Hispanic origin*	0%	1.6%	0.7%	1.3%

\* Hispanics can be of any race.

#### Neighboring Cities - Percent Population Change

	'90 <sup>1</sup> -'00 <sup>1</sup>	'00 <sup>1</sup> -'10 <sup>1</sup>	'10 <sup>1</sup> -'18 <sup>2</sup>
Martensdale	-4.89%	-0.43%	0.43%
Patterson	-1.56%	3.17%	24.62%
Spring Hill	6.98%	-31.52%	3.17%
St. Charles	15.27%	5.49%	-4.90%
St. Marys	18.58%	-5.22%	-1.57%
Bevington	-13.43%	8.62%	9.52%
Madison County	12.30%	11.84%	3.36%
State of Iowa	5.39%	4.10%	3.60%

#### City and County Percent Population Change



#### Regional Director

Brooke Blessington  
200 W 2nd Avenue, Suite A  
Indianola, IA 50125  
bbless@iastate.edu  
515-961-6237

#### County Office

Brooke Blessington  
117 N John Wayne Dr  
Winterset, IA 50273  
bbless@iastate.edu  
515-462-1001

<http://indicators.extension.iastate.edu>

# Demographic Profile

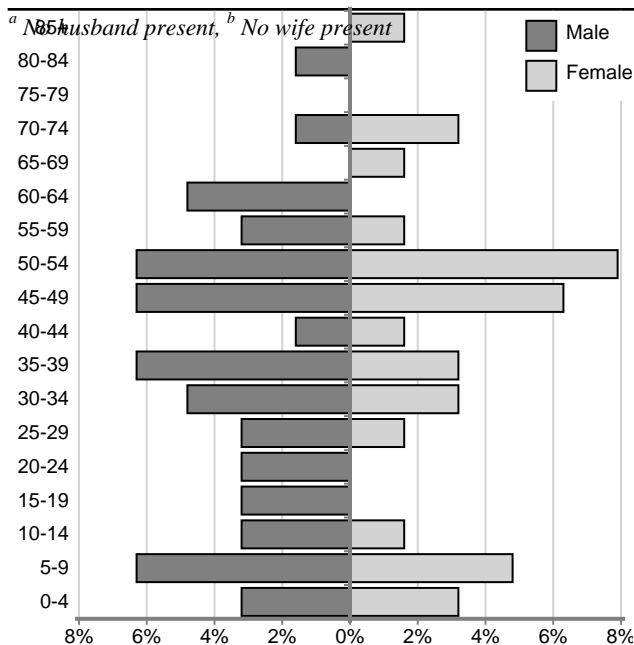
# Bevington, Iowa

The City of Bevington, compared to Madison County, had a lower percentage of young people (17 or younger) and a lower percentage of older people (65 and older) in 2010. Population pyramids<sup>6</sup> visually graph the age-sex composition of the population for Bevington and Madison County. Each bar represents the percent of the total population for each age-sex group.

**Households and Families by Type<sup>1</sup>**

	City		County	
	2000	2010	2000	2010
Total Households	24	28	5,326	6,025
Family Households	66.7%	64.3%	73.7%	73.2%
Married-couple	62.5%	42.9%	63.9%	62.3%
With Children	33.3%	10.7%	28.5%	26.7%
Female Householder <sup>a</sup>	4.2%	3.6%	7%	7.3%
With Children	0%	0%	4.7%	4.7%
Male Householder <sup>b</sup>	2.6645352	17.9%	2.8%	3.6%
Householder Living Alone	591004E-1	5%	22.7%	23%
With Children	0.0%	17.9%	1.6%	2.2%
Nonfamily Households	33.3%	35.7%	26.3%	26.8%

**Bevington, Iowa Population Pyramid, 2010<sup>1,6</sup>**

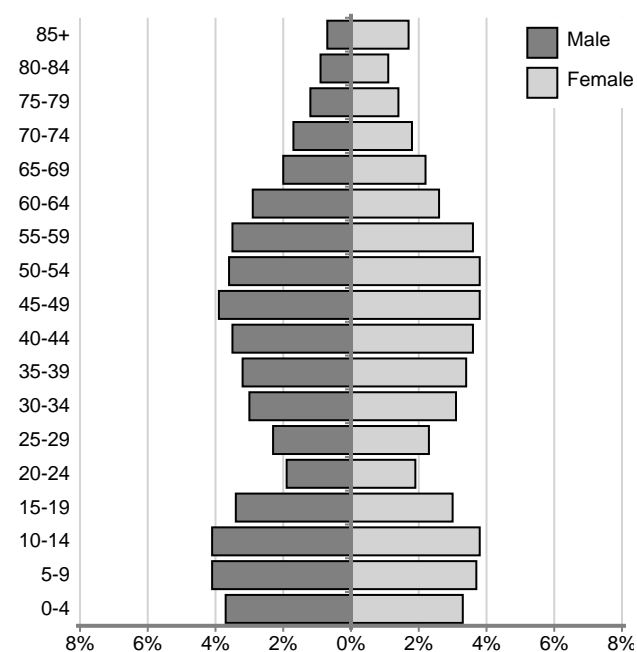


**Percentage of Population by Age<sup>1</sup>**

Age Groups	City		County	
	2000	2010	2000	2010
17 or younger	20.7%	25.4%	27.1%	27.2%
18 - 24	12.1%	3.2%	6.9%	5.7%
25 - 44	34.5%	25.4%	27.4%	24.5%
45 - 64	22.4%	36.5%	23.4%	27.8%
65 or older	10.3%	9.5%	15.2%	14.8%
85 or older	1.7%	1.6%	2.8%	2.4%
Median Age (years) <sup>4</sup>	37.0	39.5	37.9	39.8
Age Dependency <sup>5</sup>	44.9	53.6	73.3	72.4
Old-Age	14.9	14.6	26.3	25.5
Child	30.0	39.0	47.0	46.9

<sup>5</sup>Age Dependency Ratio

**Madison County Population Pyramid, 2010<sup>1,6</sup>**



**This series was prepared by:**

Christopher J. Seeger, Professor & Extension Specialist  
 Bailey Hanson, Systems Analyst II & Extension Specialist  
 Sandra Burke, Assistant Scientist III & Extension Specialist

For more information on these and other topics, please call the Extension and Outreach specialists listed on the cover page or visit the ISU Extension and Outreach Indicators Portal at [indicators.extension.iastate.edu](http://indicators.extension.iastate.edu)

**Information in this document was derived from:**

- <sup>1</sup> U.S. Census Bureau; Decennial Census 1990, 2000, 2010 Summary File 1
- <sup>2</sup> U.S. Census Bureau; Population Estimates Program 2018
- <sup>3</sup> U.S. Census Bureau; American Community Survey, 2014-2018
- <sup>4</sup> Median is the middle value of a distribution.
- <sup>5</sup> Compares, those typically not in the labor force with those typically in the labor force. Old Age dependency is persons 65+ per 100 persons age 18-64. Child dependency is persons under age 18 per 100 persons age 18-64. The total age dependency ratio is persons under age 18 plus persons 65 or older per 100 persons age 18-64.
- <sup>6</sup> Population Pyramids represent the age-sex composition of a population. Bars may be missing if particular age-sex groups are missing from the population.

Iowa State University Extension and Outreach does not discriminate on the basis of age, disability, ethnicity, gender identity, genetic information, marital status, national origin, pregnancy, race, color, religion, sex, sexual orientation, socioeconomic status, or status as a U.S. veteran, or other protected classes. (Not all prohibited bases apply to all programs.) Inquiries regarding non-discrimination policies may be directed to the Diversity Advisor, 2150 Beardshear Hall, 515 Morrill Road, Ames, Iowa 50011, 515-294-1482, [extdiversity@iastate.edu](mailto:extdiversity@iastate.edu). All other inquiries may be directed to 800-262-3804.